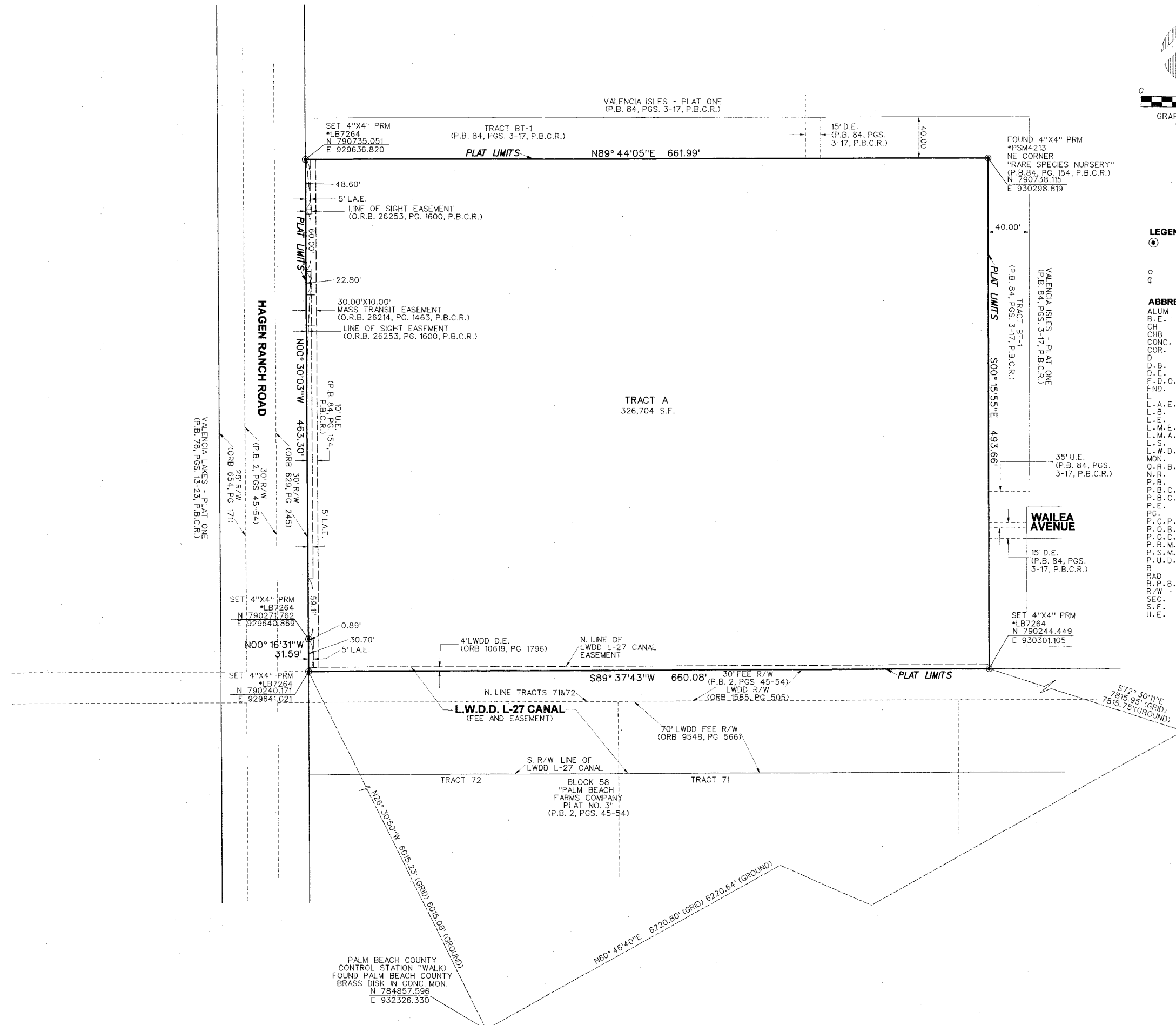
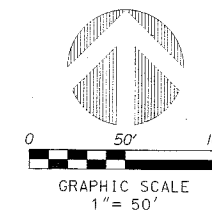




SURVEYING & MAPPING
Certificate of Authorization No. LB7264
Prepared by: Jeff S. Hodapp, P.S.M.
949A Clint Moore Road
Boca Raton, Florida 33487
Tel: (561) 241-9988
Fax: (561) 241-5182

ALLEGRO AT BOYNTON BEACH

A REPLAT OF ALL OF "RARE SPECIES NURSERY" (P.B. 84, PG. 154, P.B.C.R.)
LYING IN SECTION 33, TOWNSHIP 45 SOUTH, RANGE 42 EAST,
PALM BEACH COUNTY, FLORIDA.



LEGEND:

- SET P.R.M. (UNLESS OTHERWISE NOTED) - 4" X 4" CONC. MON. WITH ALUMINUM DISK
- STAMPED P.R.M. #LB7264
- PERMANENT CONTROL POINT CENTERLINE

ABBREVIATIONS:

- ALUM. ALUMINUM
- B.E. BUFFER EASEMENT
- CH. CHORD
- CHB. CHORD BEARING
- CONC. CONCRETE
- COR. CORNER
- D. DELTA (CENTRAL ANGLE)
- D.B. DEED BOOK
- D.E. DRAINAGE EASEMENT
- F.D.O.T. FLORIDA DEPARTMENT OF TRANSPORTATION
- FND. FOUND
- L. ARC LENGTH
- L.A.E. LIMITED ACCESS EASEMENT
- L.B. LICENSED BUSINESS
- L.E. LANDSCAPE EASEMENT
- L.M.E. LAKE MAINTENANCE EASEMENT
- L.M.A.E. LAKE MAINTENANCE ACCESS EASEMENT
- L.S. LICENSED SURVEYOR
- L.W.D.D. LAKE WORTH DRAINAGE DISTRICT
- MON. MONUMENT
- O.R.B. OFFICIAL RECORDS BOOK
- N.R. NON-RADIAL
- P.B. PLAT BOOK
- P.B.C. PALM BEACH COUNTY
- P.B.C.R. PALM BEACH COUNTY RECORDS
- P.E. PEDESTRIAN EASEMENT
- PG. PAGE
- P.C.P. PERMANENT CONTROL POINT
- P.O.B. POINT OF BEGINNING
- P.O.C. POINT OF COMMENCEMENT
- P.R.M. PERMANENT REFERENCE MONUMENT
- P.S.M. PROFESSIONAL SURVEYOR & MAPPER
- P.U.D. PLANNED UNIT DEVELOPMENT
- R. RADIUS
- RAD. RADIAL
- R.P.B. ROAD PLAT BOOK
- R/W. RIGHT-OF-WAY
- SEC. SECTION
- S.F. SQUARE FEET
- U.E. UTILITY EASEMENT

PALM BEACH COUNTY CONTROL STATION "FORD" FOUND PALM BEACH COUNTY STEEL DISK
N 787894.567
E 937755.433

PALM BEACH COUNTY CONTROL STATION "WALK" FOUND PALM BEACH COUNTY BRASS DISK IN CONC. MON.
N 784857.596
E 932326.330